



**Commonwealth
Club Travel**

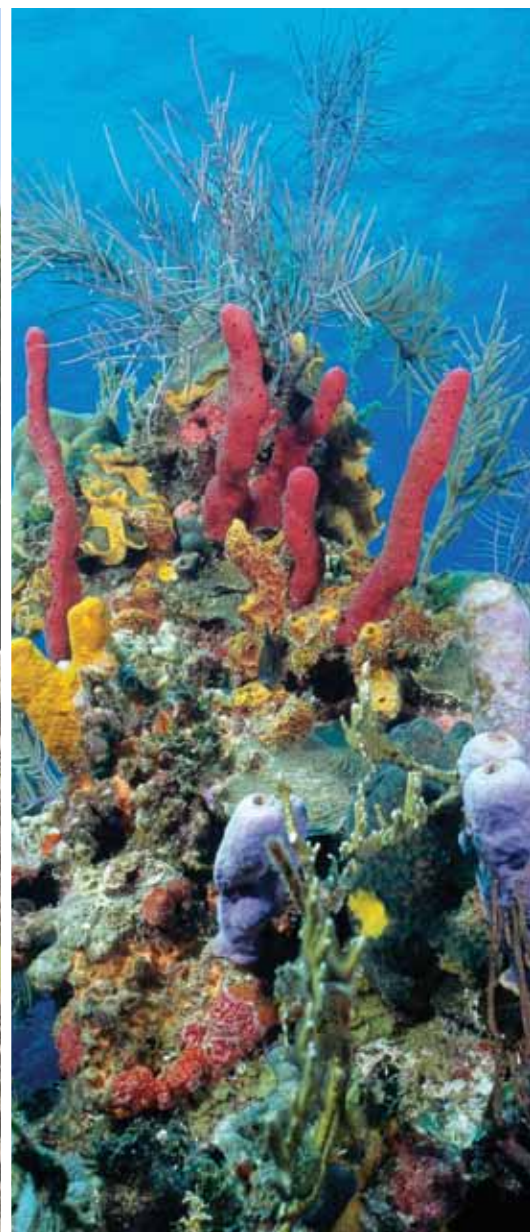
WITH
SPECIAL GUEST LECTURER
**AMBASSADOR
MARILYN MCAFFEE**

A Cruise Expedition to
**ANCIENT SITES,
RAIN FORESTS & CORAL REEFS**

**Exploring the Natural & Archaeological
Treasures of Belize and Guatemala**

• Aboard the American Small Cruise Ship *Yorktown* •

January 19 – 26, 2013



“THE RICHEST AND MOST REMARKABLE CORAL REEFS IN THE ENTIRE WESTERN CARIBBEAN.” —CHARLES DARWIN

Stretching for 190 miles off the coast of Belize, the Belize Barrier Reef is one of the world's most diverse marine ecosystems. Researchers have identified 70 species of hard coral, 36 species of soft coral, 500 species of fish, and hundreds of species of invertebrates. And in all probability, these finds represent only 10 percent of the marine life of the reef.

Experts will introduce you to the wonders of a magnificent world that is home to countless tropical fish and several varieties of other marine life. Snorkelers can make their own discoveries along Half Moon Caye, while birders can visit the permanent colonies of red-footed boobies and frigates.



Scarlet Macaws



Coral reef marine life



Snorkeling in Belize's crystal clear waters

TRAVEL IN THE COMPANY OF EXPERTS

This voyage features an experienced team of expedition staff and lecturers—naturalists, Mayanists, archaeologists, scientists, and leaders who are intimately familiar with our destinations. Through a series of lectures and informal discussions, they will introduce you to the culture, history, architecture, art, botany, birds, wildlife, and marine life of these unforgettable lands. Among the experts you may travel with are:

SPECIAL GUEST LECTURER



Ambassador Marilyn McAfee (Ret.) served as a career foreign service officer for 31 years. Promoted to the rank of Career Minister in 1997, she has received the Presidential Meritorious Award, the Superior Honor Award and the Distinguished Honor Award. Democracy building and conflict resolution have often been a special focus in her assignments, many of which were in Latin America, including Guatemala, where she served as U.S. Ambassador from 1993-1996.



Renowned epigrapher and translator of the Paris Codex, Bruce Love has more than 35 years of experience working at ancient Maya sites. He has published a number of books and articles on subjects ranging from contemporary Maya ritual practice to hieroglyphic writing of the Maya Classic Period (A.D. 300-900). “My goal as study leader,” he says, “is for each traveler to appreciate that Classic Maya culture was one of the great civilizations of the world, with science, art, and literacy, and that it did not die, but continues today among the living Maya.”

Expedition Leader John Frick has led groups on programs throughout Central America, the Galapagos, the Mediterranean, Antarctica, and several other regions of the globe for over 15 years.

Naturalist and field biologist Chris Cutler studied biology at the University of California, Santa Cruz, where he began several years of investigation of birds and marine mammals.

Naturalist and photographer Jonathan Green studied Geology and Geography at the University of North London. He has spent the last 20 years working in Central and South America.

Garvin (Garv) Hoefler has an M.A. in biology. He has worked in or visited over 50 countries, exploring coral reefs, rain forests, desert settings, open seas, sandy beaches, and even local communities to get a taste of how different people manage their lives and their environment.

Dear Club Member,

Belize is home to untouched natural marvels and fascinating ancient cities. On this cruise, we will explore Maya ruins set amongst the natural environment, experience the wonders of the rain forest, swim in pristine white sand beaches, and snorkel in crystal clear waters to discover astonishing marine life.

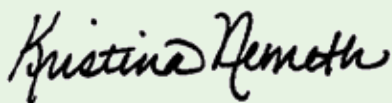
An itinerary so rich in natural wonders requires gifted scholars and teachers to bring it all to life. We will be accompanied by an experienced expedition and lecturer team, which includes **Ambassador Marilyn McAfee (Ret.)**, U.S. Ambassador to Guatemala from 1993-1996. Through onboard lecturers and informal discussions, Ambassador McAfee will enlighten travelers to issues of democracy building and conflict resolution in Central America.

Also joining us onboard will be the renowned Mayanist and translator of the Paris Codex, **Bruce Love**. Dr. Love's lectures will focus on the hieroglyphic writing of the Maya Classic Period, the sacred books of the calendar priests, the survival of Maya culture into the Colonial Period, and the contemporary Maya of today.

We will cruise aboard the American-flagged and operated Yorktown, whose size and limited passenger capacity will allow for easy passage through the cays of the barrier reef and make it possible to access small ports along the coast.

Other partnering sponsors of this voyage include the World Affairs Council of Philadelphia and the National Trust for Historic Preservation. I hope you will be able to join the Commonwealth Club and travelers from like-minded institutions, as we experience the exotic, beautiful world of Belize and Guatemala.

Sincerely,



Kristina Nemeth
Director of Club Travel



Right: The ancient Maya site of Quirigua is noted for its sculpted stelae



ITINERARY

Saturday, January 19, 2013 ■

USA | BELIZE CITY, Belize | EMBARK

Fly to Belize City and embark *Yorktown*. Overnight aboard ship. (D)

Sunday, January 20 ■ LIGHTHOUSE REEF

Sail in the morning for Lighthouse Reef, navigating through the Barrier Reef. Land at Half Moon Caye, at the southern fringe of the reef, which is the breeding ground of the endangered red-footed booby and other birds. After exploring this idyllic spot, board local boats for the short trip to the celebrated Great Blue Hole, a large circular formation with its incredible blue and black hues. Part of an underwater national park, the hole is surrounded by a 1,000-foot coral rim that rises to the lagoon's surface. (B, L, D)

**Monday, January 21 ■ DANGRIGA | MAYFLOWER
BOCAWINA NATIONAL PARK | DANGRIGA**

Arrive in Dangriga and drive to the nearby Mayflower Bocawina National Park, a lush forested area at the foothills of the Maya Mountains. Walking trails lead to waterfalls and Maya temples, including Mayflower, a Late Classic site. After exploring this area of great beauty, return to Dangriga to learn about Garifuna culture at the Gulisi Garifuna Museum, visit local artists' galleries, and shop for fine crafts made by the Garifuna people, or relax at a nearby beach. (B, L, D)

**Tuesday, January 22 ■ SANTO TOMAS DE CASTILLA |
QUIRIGUA | SAN FELIPE FORTRESS |
SANTO TOMAS DE CASTILLA, Guatemala**

Surrounded by rain forest, Quirigua is an ancient Maya center, now a UNESCO World Heritage site, that is justly famous for its superbly intricate and well-preserved carvings on huge stone stelae that are spread around the Great Plaza. After exploring the site, drive to the waterside village of San Felipe for a visit to its fortress, which was built by the Spanish in the mid-17th century to protect their trade routes from British pirates, and today offers splendid views of the lake and the surrounding forest. (B, L, D)

**Wednesday, January 23 ■ PUNTA GORDA | LUBAANTUN |
NIM LI PUNIT | SNAKE CAYES, Belize**

Sail to Punta Gorda, a small town set on cliffs above the sea. Drive inland to explore two rarely-visited ancient Maya sites, Lubaantun and Nim Li Punit. Lubaantun includes five plazas flanked by buildings and ball courts,

THE EDEN OF THE AMERICAS

Belize is an ecological marvel. Its rain forests are home to jaguars, howler monkeys, ocelots, and giant tapirs. Its lush plant life attracts more tropical birds than any other place in Central America, including the keel-billed toucan. Along the banks of the jungle rivers grow mahogany, campeche, sapote, and the towering ceiba, one of the tallest trees in the rain forest. Overhead, flowering vines link the trees, creating a gorgeous jungle canopy.



A welcoming Belizean smile

For reservations or information, please call us at (415) 597-6720



Kayaking through Belize's pristine rain forest

and Nim Li Punit was the ceremonial and religious center of the region, known for its impressive stelae. Return to Punta Gorda to reboard *Yorktown*. Over lunch aboard, sail to the Snake Cayes for swimming and snorkeling. (B, L, D)

Thursday, January 24 ■ BIG CREEK | COCKSCOMB BASIN WILDLIFE SANCTUARY

From Big Creek, drive to the Cockscomb Basin Wildlife Sanctuary, a dense tropical rain forest set against the peaks of the Maya Mountains. Clear streams and rivers traverse this protected sanctuary that is home to a rich variety of wildlife, including tapir, armadillo, anteater, jaguar, and over 290 species of birds. (B, L, D)

Friday, January 25 ■ LAUGHING BIRD CAYE & SOUTH WATER CAYE

Sail in the morning for Laughing Bird Caye, part of the Belize Barrier Reef Reserve System, a UNESCO World Heritage site. Spend the morning discovering the fantastic marine world. Cruising north in the Inner Channel, we reach South Water Caye, which affords memorable swimming and snorkeling in crystal-clear water, while the beach is ideal for relaxing. Late in the afternoon, sail to Belize City, arriving in the evening. Overnight aboard docked in port. (B, L, D)

Saturday, January 26 ■ BELIZE CITY | DISEMBARK | USA
Disembark in the morning and transfer to the airport for the return flight home. (B)

THE EMPIRE OF THE MAYA

In mathematics, astronomy, architecture, art, even pottery, the Maya surpassed many civilizations. They developed a complicated form of hieroglyphic writing and sophisticated calendars. They cleared vast areas of the rain forest and erected magnificent stone cities. Yet for all their scientific and technological sophistication, they never discovered the wheel. Then, around A.D. 900, Maya civilization collapsed, and the Maya abandoned their splendid cities. What brought about the fall of this great civilization? There are theories, but to this day there is no definitive answer to that question.

No journey to Central America would be complete without visiting Maya sites, and our itinerary includes Quirigua, famous for its collection of magnificently carved stelae that represent Maya kings and priests, and Lubaantun, a ceremonial center where all the stone structures were built without mortar: Maya masons cut each block so carefully that they fit perfectly together, like a jigsaw puzzle in stone. If you wish, you can join a pre-cruise excursion to Tikal, one of the most magnificent Maya sites, famous for its soaring pyramids.



Maya carving



Hiking in the Cockscomb Basin Jaguar Preserve



YORKTOWN—A SHIP BUILT FOR COASTAL CRUISING

Built in Florida, staffed by American crew and officers, and flying the American flag, *Yorktown* is the ideal ship for this voyage to Belize and Guatemala. As a small ship—257 feet long, 43 feet wide, with a draft of 8 feet—*Yorktown* can navigate the Barrier Reef, small bays, and little cays that are inaccessible to mammoth cruise liners.

The ship accommodates no more than 138 guests in 69 exterior cabins. The atmosphere aboard is warm, friendly, and informal. The spacious, comfortable lounge is ideal for conversation and presentations from accompanying naturalists and marine biologists. The large dining room—where all guests are accommodated in a single, unassigned seating—is surrounded by large windows.

The ship also features a large sun deck, a swimming platform, and Internet access.

OPTIONAL PRE-CRUISE EXTENSION TO TIKAL

Explore two magnificent Maya sites in depth, prior to embarking on your voyage. The optional pre-cruise extension begins with one night in the *Radisson Fort George Hotel and Marina* in Belize City. From here, we drive to Xunantunich, one of the country's most impressive Maya archaeological sites, then cross the border into Guatemala and continue driving to Tikal, located near the town of Flores and Petén Itzá Lake. Accommodations will be at the *Hotel Camino Real Tikal* for two nights. Explore fabled Tikal, perhaps the most magnificent and significant site in the Maya world, at your leisure. On the final day of the excursion, visit Tikal at sunrise and then return to Belize City to board *Yorktown*, stopping en route at the Belize Zoo to view Belize's native animals in quarters that resemble their natural habitat.

Rate: \$985 per person, double occupancy.
Single supplement: \$265



FREE AIRFARE

Free round-trip economy class airfare from San Francisco to Belize City for Commonwealth Club travelers. Airfare from other U.S. cities available at an additional cost.



OUR ALL-INCLUSIVE CRUISE FEATURES:

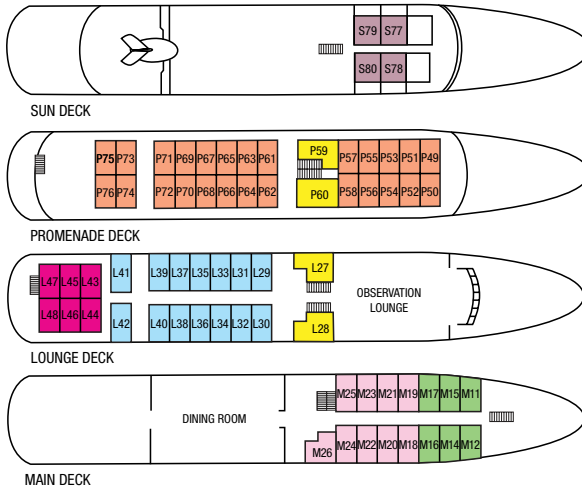
- FREE AIRFARE FROM SAN FRANCISCO (see above)
- 7-night cruise aboard the 138-guest *Yorktown*
- Complete program of tours and excursions in each port of call
- All meals aboard ship, including complimentary house wine, beer, and soft drinks with lunch and dinner
- Welcome and farewell cocktail receptions aboard ship
- Enrichment program of lectures and discussions by accompanying naturalists and study leaders
- Professional Travel Dynamics International tour staff
- Complete pre-departure materials
- Baggage handling and transfers abroad on the designated program arrival and departure dates
- Gratuities to porters, guides, and drivers

NOT INCLUDED: Airfare other than specified above; port and embarkation taxes; luggage and trip cancellation insurance; alcoholic beverages other than wine and beer with lunch and dinner; personal expenses such as laundry, telephone calls, faxes, and e-mail service; and gratuities to shipboard personnel.

THE 138-GUEST YORKTOWN DECK PLAN

NO SINGLE SUPPLEMENT

A limited number of cabins in Categories B & C have been set aside for single occupancy at NO SINGLE SUPPLEMENT.



Most cabins feature a large picture window



Yorktown's inviting dining room

| PER PERSON, DOUBLE OCCUPANCY | | |
|--|--|---------|
| CATEGORY | DESCRIPTION | RATES |
| E | Outside cabins with two lower beds, two portholes, and private bathroom. Cabins M11-M17 | \$3,795 |
| D | Outside cabins with two lower beds, two windows, and private bathroom. Cabins L43-L48 | \$4,395 |
| C | Outside cabins with two lower beds, two windows, and private bathroom. Cabins P49-P76 | \$4,995 |
| B | Outside cabins with two lower beds, picture window, and private bathroom. Cabins M18-M26 | \$5,595 |
| A | Outside cabins with two lower beds, picture window, and private bathroom. Cabins L29-L42 | \$5,995 |
| AA | Outside cabins with two lower beds that can convert to a queen bed, picture window, and private bathroom. Cabins L27, L28, P59*, P60 *P59's two lower beds cannot be converted. | \$6,495 |
| S | Superior outside cabins with walk-out balcony, full-size bed, private bathroom, and mini-refrigerator. Cabins S77-S80 | \$6,995 |
| PORT TAXES & CHARGES: \$195 per person | | |

GENERAL INFORMATION

PAYMENT SCHEDULE: A deposit of \$750 per person is required to reserve your space on the tour. For your convenience, you may charge your deposit to your American Express, Visa, Discover, or MasterCard. Final payment is due 90 days prior to departure. Credit cards are not accepted for final payment. However, personal checks are accepted for both deposits and final payment.

CANCELLATIONS & REFUNDS: All cancellations are subject to a \$300 per person fee. Cancellations received within 60 days of departure are subject to 100% cancellation penalties.

INSURANCE: We recommend the purchase of trip cancellation insurance. The Commonwealth Club will send you information on Trip Cancellation Insurance with your confirmation.

ITINERARY: The itinerary, accommodations, and arrangements are subject to change at the discretion of Travel Dynamics International.

FUEL SUPPLEMENT: Travel Dynamics International reserves the right to charge a fuel supplement, without prior notice, if the NYMEX oil price exceeds \$85 per barrel. This supplement may be charged even if the cruise fare has been paid in full.

SHIP'S REGISTRY: USA CST #204 3599-40 TDI CST #2096889-40 Commonwealth Club Travel
DOE TO SPACE LIMITATIONS, THIS IS ABBREVIATED INFORMATION. PLEASE CONTACT US FOR COMPLETE TERMS AND CONDITIONS.

REGISTRATION

CMWC 13603

Enclosed is my check or credit card no. for \$_____ (\$750 per person) as a deposit to hold _____ place(s) on **Ancient Sites, Rain Forests & Coral Reefs**. I understand that final payment is due ninety (90) days prior to departure and is payable by check only.

Please make check payable to: **Travel Dynamics International** and mail with this registration form to: **Commonwealth Club Travel**
595 Market St., 2nd Floor, San Francisco, CA 94105
Phone: 415-597-6720 **Fax:** 415-597-6729

☐ AmEx ☐ Discover ☐ Visa ☐ MasterCard

No. _____ Exp. _____

3- or 4-Digit Security Code _____

Please select cabin category in order of preference:

S__ AA__ A__ B__ C__ D__ E__

☐ Twin Beds ☐ Double Bed ☐ Single Occupancy ☐ Share
(Cannot be guaranteed)

☐ Please book me/us on the Pre-Cruise Optional Extension in Tikal (at additional cost)

DR./MR./MRS./MS. FIRST LAST

DR./MR./MRS./MS. FIRST LAST

ADDRESS

CITY/STATE/ZIP

TELEPHONE (DAY) (EVENING)

E-MAIL

Each participant must sign below:
I/We have read the "General Information" section and agree to its terms.

SIGNATURE DATE

SIGNATURE DATE



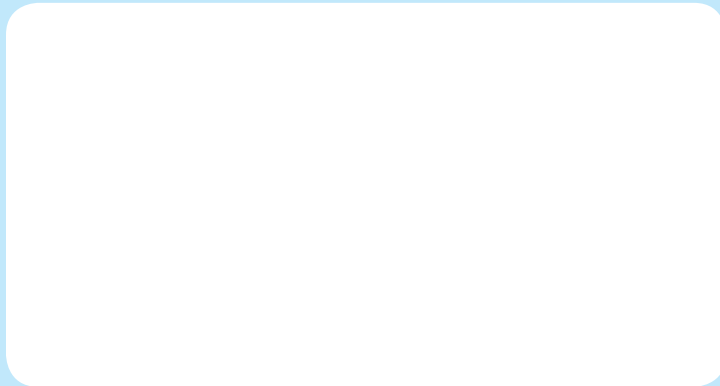
A palm forest in Belize



**Commonwealth
Club Travel**
595 Market St., 2nd Floor
San Francisco, CA 94105



PRSRT STD
U.S. Postage
PAID
Travel Dynamics
Int'l



For reservations or further information, please contact
Commonwealth Club Travel at
(415) 597-6720
or via e-mail at
travel@commonwealthclub.org



CMWC 13603

**WE INVITE YOU ON A CRUISE TO DISCOVER THE
EXTRAORDINARY TREASURES OF BELIZE & GUATEMALA**



Coral and school of fish